

**SCARAB
BREED**



ISEP



User Manual

BEETLE BREEDER V2

R. Dr António
Bernardino de
Almeida

[https://www.eps2024-
wiki4.dee.isep.ipp.pt/doku.php?](https://www.eps2024-wiki4.dee.isep.ipp.pt/doku.php?)





Table of Contents

02 Introduction to
Scarabreed

03 Product
Overview

05 Assembly
Guideline

05 Usability
Guideline

06 Packaging
Reusability

07 Product &
User Safety

07 CE
Marking

08 Warranty
Conditions

09 Warnings

09 Contact
Support



Introduction to **Scarabreed**

At Scarabreed, we are passionate about advancing the field of beetle breeding through innovation, sustainability, and excellence. Founded with a vision to support conservation efforts for endangered beetle species, Scarabreed combines cutting-edge technology with a deep commitment to environmental stewardship.

Our Mission

Our mission is to provide tools for our customer needs to create optimal breeding conditions for beetles. We understand the critical role that beetles play in ecosystems around the world, and we are dedicated to ensuring their survival through advanced breeding techniques.

Innovative Products

We created a new generation of vivariums that are equipped with advanced monitoring and control systems, allowing users to regulate temperature, humidity. By providing an ideal environment, our vivarium helps maximize breeding success and supports the growth of healthy beetle populations.

Sustainability at Heart

Sustainability is a core principle that guides everything we do. Our vivariums are designed using eco-friendly materials, ensuring minimal environmental impact. We prioritize energy efficiency in all our products, helping to reduce the carbon footprint of beetle breeding operations.

We are actively involved in habitat restoration projects and collaborate with conservation organizations to promote biodiversity. We only use local suppliers and local manufacturers to reduce transportation emissions.

Customer Commitment

Customer satisfaction is at the forefront of our business. We strive to exceed the expectations of our clients by offering exceptional customer service, comprehensive product support, and transparent operations. Whether you are a professional breeder, a researcher, or a conservationist, Scarabreed is dedicated to helping you achieve your goals.



**The Scarabreed
Team**



Product

Overview

BEETLE
BREEDER V2

Advanced Environmental Control

- **Precision Monitoring:** The Beetle Breeder Version 2 (BBV2) is equipped with sensors that continuously monitor temperature, humidity, light, and ventilation. This ensures optimal conditions tailored to the specific needs of different beetle species.
- **Automated Adjustments:** With an intelligent control system, the BBV2 automatically adjusts environmental parameters to maintain the perfect breeding environment, reducing the need for manual intervention and minimizing the risk of human error.

User-Friendly Interface

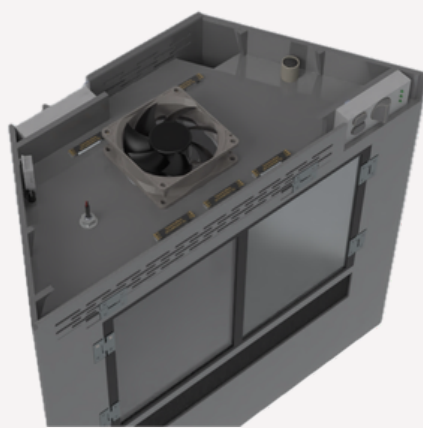
- **Intuitive Touchscreen:** The BBV2 features an easy-to-use touchscreen interface that allows users to monitor and adjust settings with ease. The interface provides real-time data and alerts to ensure you are always informed about the conditions within the vivarium.
- **Mobile Connectivity:** Control your BBV2 from anywhere with our dedicated mobile app. Monitor conditions, receive notifications, and make adjustments remotely to ensure your beetles are always in the best possible environment.

Eco-Friendly Design

- **Sustainable Materials:** The BBV2 is constructed from eco-friendly, durable materials that are both biodegradable and recyclable. This reduces the environmental impact of the product and aligns with Scarabreed's commitment to sustainability.
- **Energy Efficiency:** The BBV2 is designed to be energy-efficient, utilizing low-power components and energy-saving technologies to minimize its carbon footprint.

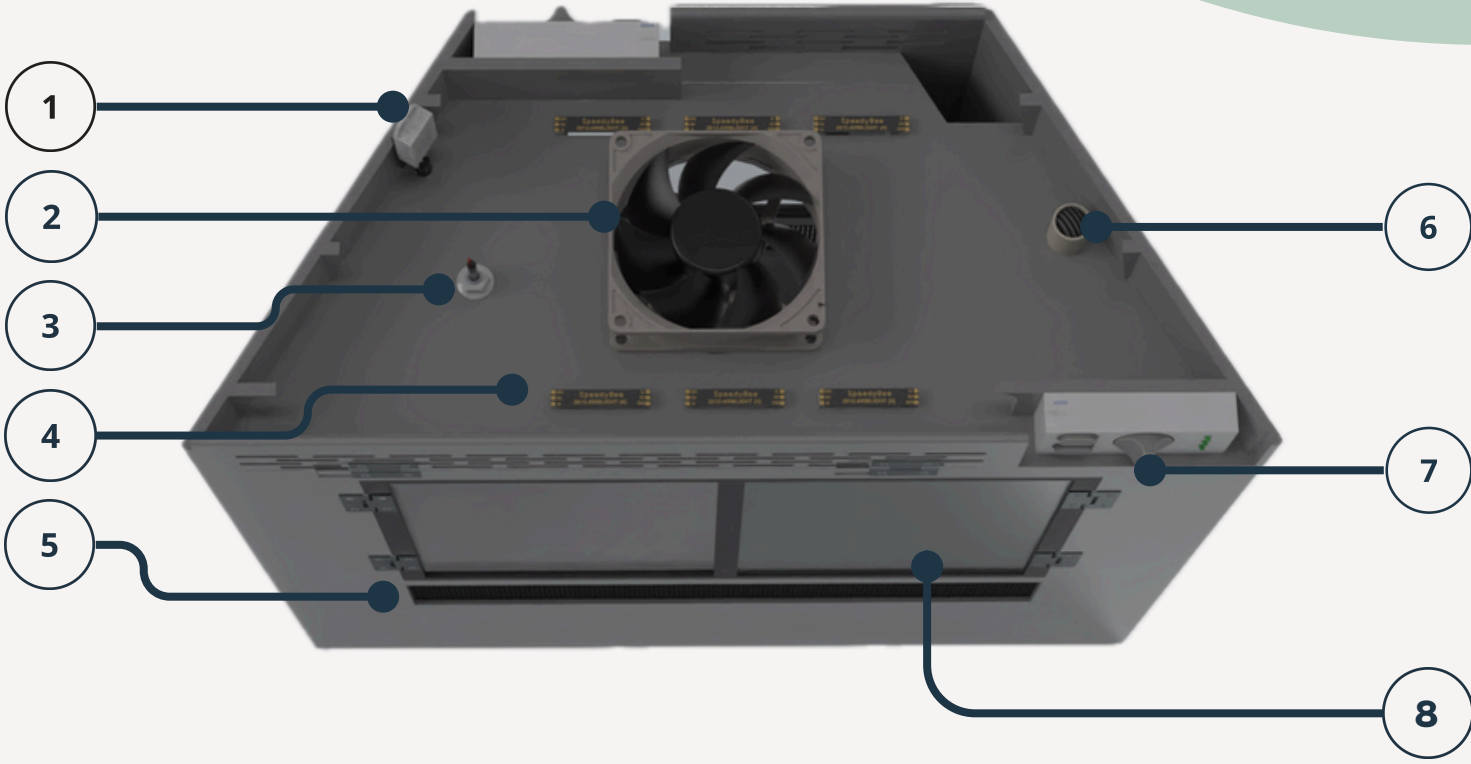
High-Quality Construction

- **Durable Build:** Engineered to last, the BBV2 is made from high-quality materials that ensure longevity and reliability. Its robust construction is designed to withstand the demands of continuous use in professional breeding settings.
- **Optimal Ventilation:** The vivarium's design includes an advanced ventilation system that ensures fresh air circulation while preventing the buildup of harmful gases, crucial for maintaining a healthy environment for beetles.





Product Overview



1 Humidity Sensor

2 Fan

3 Infrared Light

4 Led

5 Aereation

6 Buzzer

7 Control Panel

8 Door

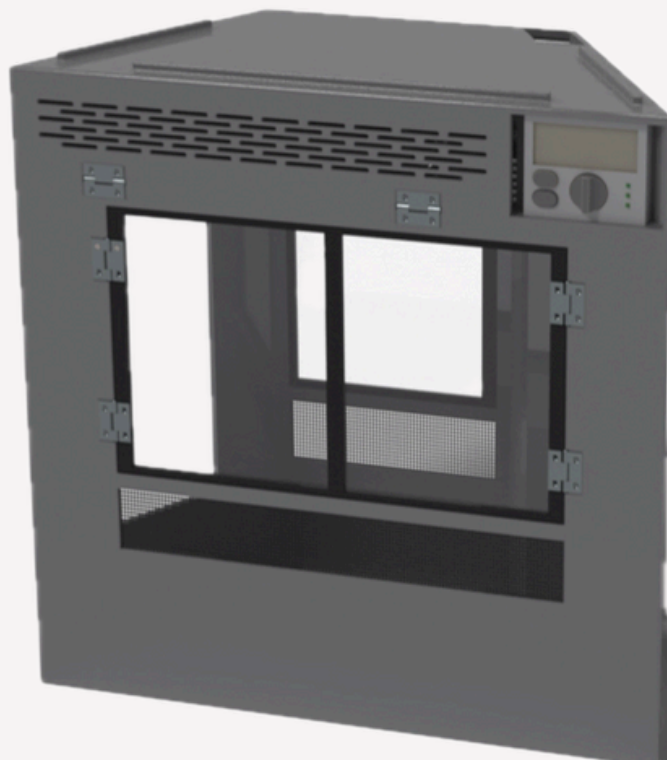


Assembly Guideline

- Upon initial setup, the BBV2 is ready to use. Once the vivarium has been plugged into an outlet, it is ready for use.

Usability Guideline

- The vivarium display includes a series of buttons that allow you to cycle through the different sensors. These sensors indicate humidity, temperature, the closing of the vivarium, the usage of the fan, the lighting, and the infrared for heating. When the BBV2 is plugged in, the LCD will automatically light up, enabling you to monitor the vivarium.





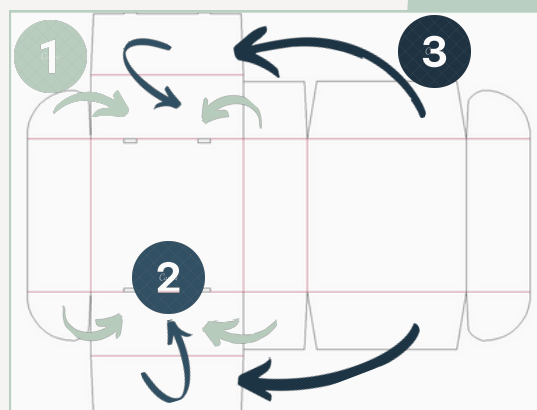
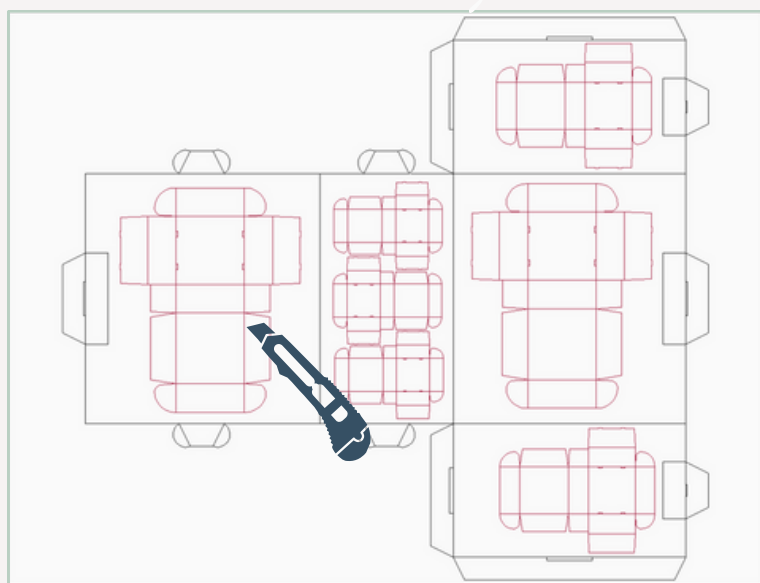
Packaging

Reusability

At Scarabreed, we are committed to sustainability and environmental responsibility. The packaging for the Beetle Breeder V2 (BBV2) is designed not only to protect the product during shipping but also to be reusable and functional for our customers.

Reusability Features

- **Customizable Templates:** Inside the packaging, you will find seven pre-drawn templates. These templates can be cut out and assembled into small boxes, providing convenient storage solutions for beetle-related items such as food, tools, and accessories.
- **Glue-Free Assembly:** The small boxes are designed to be assembled without the need for glue. Simply follow the cut lines and fold along the provided guidelines to create sturdy, reusable storage boxes.
- **Organized Storage:** Once assembled, these small boxes can be neatly stored in the bottom section of the main packaging box. This keeps your beetle breeding accessories organized and easily accessible, all while reducing waste.



- 1 Fold the two tabs in the side
- 2 Fold the upper part on the tabs to create the final box
- 3 After filling the box, close the top of the box

Sustainable Benefits

- **Reduced Waste:** By reusing the packaging materials, you contribute to reducing waste and promoting sustainability. Instead of discarding the packaging, you transform it into practical storage solutions.
- **Eco-Friendly Materials:** The packaging is made from eco-friendly, recyclable materials. This ensures that even if you choose not to reuse the packaging, it can be disposed of in an environmentally responsible manner.

By utilizing and repurposing the packaging, you can enjoy a more organized and eco-conscious beetle breeding experience.



Product & User Safety

The Beetle Breeder V2 (BBV2) has been meticulously designed to ensure safe operation and to create a secure environment for both the beetles and the users. Below are the key safety features and guidelines for the BBV2.

1. Product Safety Features

Robust Construction: The BBV2 is built with high-quality, durable materials that ensure the stability and integrity of the vivarium. This reduces the risk of structural failures that could endanger both the beetles and the user.

Safe Electrical Components: All electrical components, including sensors, controllers, and lighting systems, are designed to meet stringent safety standards.

Secure Ventilation: The ventilation system is designed to ensure a consistent flow of fresh air while preventing the buildup of harmful gases.

Non-Toxic Materials: The BBV2 is constructed from non-toxic, eco-friendly materials that are safe for both beetles and humans.

2. User Safety Guidelines

Proper Installation: Ensure that the BBV2 is installed on a stable, level surface to prevent tipping or falling. Follow the installation instructions carefully to secure all components correctly.

Electrical Safety: Use only the provided power adapter and ensure it is plugged into a properly grounded electrical outlet. Avoid using extension cords or overloading power strips. Keep electrical components away from water and moisture.

Regular Maintenance: Perform regular maintenance checks to ensure all parts of the BBV2 are functioning correctly.

Safe Handling of Beetles: Handle beetles with care and use appropriate tools when necessary. Wash your hands before and after handling beetles to prevent the spread of contaminants.

Temperature and Humidity Monitoring: Regularly check and maintain the appropriate temperature and humidity levels.

Emergency Procedures: Familiarize yourself with the BBV2's emergency shutdown procedures. In case of an emergency, such as an electrical issue or environmental malfunction, promptly disconnect the power supply and follow the safety protocols.

3. Safety Warnings and Precautions

Supervision: Ensure that children and pets are supervised around the BBV2. The vivarium contains sensitive equipment and delicate beetles that could be harmed by rough handling.

Chemical Use: Avoid using harsh chemicals or cleaning agents inside the BBV2. Only use approved, non-toxic substances recommended by Scarabreed.

Ventilation: Ensure the vivarium is placed in a well-ventilated area to prevent overheating and ensure proper air circulation.

By following these safety features and guidelines, users can ensure a safe and effective beetle breeding experience with the BBV2, protecting both their beetles and themselves from potential hazards.

CE Marking



The Beetle Breeder V2 (BBV2) proudly bears the CE marking, indicating compliance with European Union regulations on health, safety, and environmental protection.

Conformity Assessment: Scarabreed has rigorously assessed the BBV2 to meet EU directives, including Electromagnetic Compatibility (EMC), Low Voltage (LVD), RoHS, and REACH regulations.

Declaration of Conformity: Scarabreed declares the BBV2's conformity with EMC, LVD, RoHS, and REACH directives, backed by adherence to relevant standards.

CE Marking: The CE marking is prominently displayed on the BBV2 and its packaging, signifying compliance and user safety.

Customer Information: Scarabreed provides comprehensive information about the CE marking, safety instructions, and contact details for customer support in user manuals and on its website.

Manufacturer Information: Scarabreed Ltd. ensures transparency with its contact details for inquiries related to product compliance and safety.



Warranty

Conditions

Thank you for choosing the Scarabreed Beetle Breeder V2 (BBV2). We are committed to providing you with a high-quality product and exceptional customer support. Please review the following warranty conditions to ensure you understand the coverage and support provided with your BBV2 purchase.

1. Warranty Coverage

Duration: The BBV2 comes with a standard warranty of 24 months from the date of purchase.

Scope: This warranty covers defects in materials and workmanship under normal use and service conditions.

2. Warranty Services

Repair or Replacement: Scarabreed will, at its discretion, repair or replace any defective components free of charge during the warranty period. If the product cannot be repaired, Scarabreed will provide a replacement of the same model or an equivalent model.

Technical Support: Customers have access to Scarabreed's dedicated technical support team for assistance with troubleshooting, setup, and optimization of the BBV2.

3. Exclusions

This warranty does not cover:

Damage caused by improper use or handling: This includes but is not limited to damage resulting from misuse, accidents, alterations, negligence, or failure to follow operating instructions.

Wear and Tear: Normal wear and tear of parts and components over time.

Unauthorized Repairs: Any repairs or modifications made by unauthorized service personnel void the warranty.

Environmental Damage: Damage caused by external factors such as power surges, water damage, fire, or other natural disasters.

Consumables and Accessories: Consumable items and accessories not included with the original product purchase.

4. Warranty Claim Process

To make a warranty claim, please follow these steps:

Contact Customer Support: Reach out to Scarabreed's customer support team via email or phone, providing your proof of purchase and a detailed description of the issue.

Return Authorization: If a return is deemed necessary, you will receive a Return Merchandise Authorization (RMA) number and instructions on how to return the product.

Shipping: The customer is responsible for shipping the product to Scarabreed. Scarabreed will cover the cost of return shipping for the repaired or replaced product.

5. Limitation of Liability

Scarabreed's liability under this warranty is limited to the repair or replacement of defective products as described above. Scarabreed is not liable for any incidental or consequential damages, including but not limited to loss of profits, downtime, or other economic losses.

6. Extended Warranty

An extended warranty may be available for purchase. For more information about extending your warranty coverage, please contact Scarabreed's customer support.

7. Governing Law

This warranty is governed by the laws of the country in which the product was purchased. Any disputes arising from this warranty shall be resolved in accordance with the applicable laws.

These warranty conditions provide clear guidelines on the coverage, exclusions, and procedures for obtaining warranty service for the BBV2.



Warnings

Electrical Safety

- Use only the provided power adapter and ensure it is plugged into a properly grounded electrical outlet.
- Do not use extension cords or overload power strips.
- Keep electrical components away from water and moisture to prevent electric shock or fire hazards.

Installation

- Install the BBV2 on a stable, level surface to prevent tipping or falling.
- Follow the installation instructions carefully to secure all components properly.

Handling

- Handle the BBV2 with care to avoid damage to the unit and its components.
- Avoid rough handling of beetles. Use appropriate tools and wash your hands before and after handling beetles to prevent contamination.

Maintenance

- Regularly clean the BBV2 according to the provided guidelines to prevent the buildup of harmful substances.
- Perform routine maintenance checks to ensure all parts are functioning correctly.

Environmental Conditions

- Ensure the vivarium is placed in a well-ventilated area to prevent overheating and ensure proper air circulation.
- Regularly monitor and maintain the appropriate temperature and humidity levels within the BBV2. Sudden changes can harm beetles and potentially cause equipment malfunctions.

Children and Pets

- Supervise children and pets around the BBV2 to prevent accidental damage or injury. The vivarium contains sensitive equipment and delicate beetles that could be harmed by rough handling.

Chemical Use

- Do not use harsh chemicals or cleaning agents inside the BBV2. Only use approved, non-toxic substances recommended by Scarabreed to avoid harming the beetles and damaging the equipment.

Emergency Procedures

- Familiarize yourself with the BBV2's emergency shutdown procedures. In case of an emergency, such as an electrical issue or environmental malfunction, promptly disconnect the power supply and follow the safety protocols.

General Precautions

- Do not modify or alter the BBV2 in any way, as unauthorized changes can void the warranty and compromise safety.
- Ensure that all users are familiar with the operating instructions and safety guidelines to prevent misuse.

Customer Support

We are glad that you joined us on our journey to protect and nurture the incredible diversity of beetle species.

We are dedicated to ensuring your complete satisfaction with the Beetle Breeder V2 (BBV2). If you have any questions or need further assistance, please do not hesitate to contact our customer support team.

Contact Information:

Email: support@scarabreed.com

Phone: +351 12 34 56 78 90

Thank you for choosing Scarabreed.